

Task 9.2.2

Update from Julich

Nigel Rhodes, ISIS

A solid dark blue horizontal bar located at the bottom of the slide.

■ 9.2.2 Scintillation detector with direct PMT readout

Use of Li glass scintillator and PMT for light collection

Use flat panel Ma PMTs

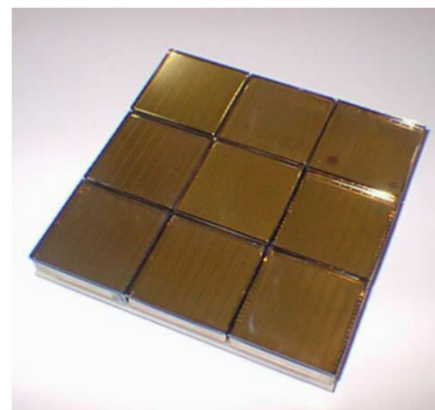
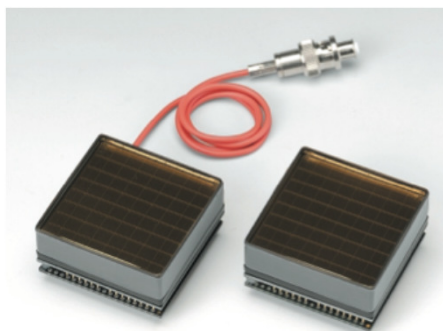
Dense array of PMTs with small amount of dead space

Position resolution determined by pixel size of individual PMTs

Count rate capability probably limited by maximum current of PMT

Energy resolution must be sufficient for n/ γ discrimination

Deal with electrical and optical cross talk between channels



Needs a lot of detector electronics.

Work needed to optimise cost of electronics per channel

Build on ASIC work carried out on NMI3 II